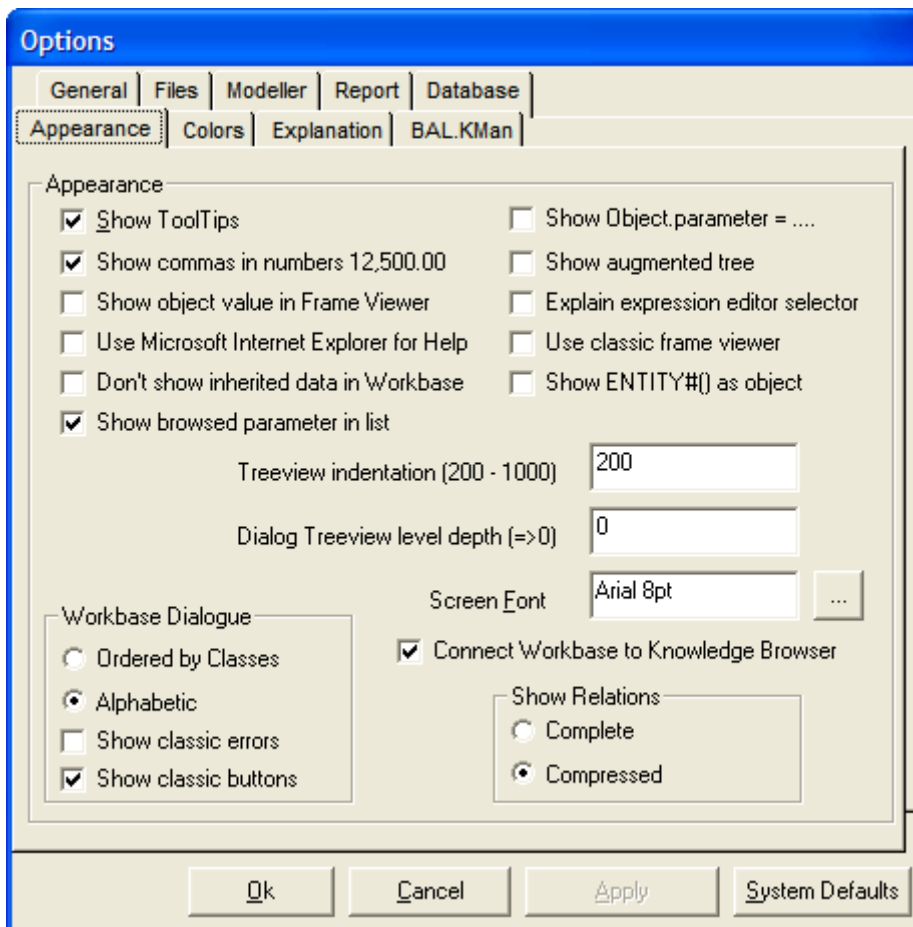


Options Appearance tab

All options related to the appearance of the [Quaestor GUI](#).



Things you can select or deselect are:

- "Show [ToolTips](#)", enables you to switch off the [ToolTips](#) in Quaestor;
- "Show commas in numbers 12,500.00", enables to show comma's as delimiter for thousands in numbers. Please note that it only relates to the [presentation](#) of values! For input you should consider the [delimiter for ranges](#). When you have chosen a comma as delimiter between values, using a comma will cause a definition of multi-case values. When the semi-colon is used as delimiter, providing a comma in a value will simply be ignored. So in that case, providing 1,000 will be accepted as 1000. But 1,0 is also accepted as 10!
- "Show object value in Frame Viewer", ...;
- "Use Microsoft Internet Explorer for Help", when enabled will cause all Help information to be presented in an external browser instead of the internal one;
- "Don't show inherited data in [Workbase](#)", provides the choice to show inherited data in a solution or the dataset of the [Workbase](#) in different colors when you are in or above an object (should be turned on when you use links between objects in the dataset such as in [MVR](#));
- "Show Object.parameter = ...", provides the choice to present the total reference of parameters in objects (so including object names) when presenting their name in the [Workbase](#) and [Explanation](#) window;
- "Show augmented tree", a specialised presentation option;
- "Explain expression editor selector", a cryptical description to enable the internal browser to follow with an explanation on an [intrinsic function](#) while selecting this function in the [Expression Editor](#);
- "Use classic frame viewer", when enabled will let you return to the classic windows layout for [knowledge engineers](#), so without the [Explanation](#) window and with the [Frame Viewer](#);
- "Show ENTITY#() as object", ...;
- "Connect [Workbase](#) to Knowledge Browser": when enabled this will change the behavior of the [Knowledge Browser](#) to show all relations of a parameter in the [Knowledge Browser](#) for the parameter in focus in the [Workbase](#).

Thing you can change are:

- You can define the treeview indentation. This will assist you with a good presentation for very complex Taxonomy trees;
- You can define the level of nodes in the treeview you want to see by default;
- You can define the Screen Font;

Further things you can select related to the [Workbase](#) dialogue:

- You can order the parameters in the [Workbase](#) Dialogue according to the order of the Classes or Alphabetically;
- You can select the classic errors (on the left side of your screen, or use the new default error and warning messages;
- You can use the classic or new [Workbase buttons](#);

Further aspect related to general presentation:

- As a [Domain Expert](#) or [Knowledge Engineer](#) you are able to switch between a compressed presentation of relations, such as $F=f(m,a)$, or the complete presentation such as $F=m*a$;
Note that end user will only be able to see relations in their compressed presentation.

[Quaestor interface](#) | [Tools > Options...](#) | [Options Colors](#)